



# TREATTON



Function International Co., Ltd.  
**Product Catalog**  
[www.functioninter.co.th](http://www.functioninter.co.th)



## ABOUT US

Function International Co., Ltd. found in 1997, has been to manufacture, import and wholesale water-related products completely as which is shown by our slogan “ All Solutions of Water ” We aim to be the leading organization in water systems in Thailand and the ASEAN region. Year of experience in the water treatment has enable us to manufacture high quality water purifiers that perform well in almost any application, including residential, commercial, and industrial.

Function International Co., Ltd. has also acquired ISO 9001:2015 certification as well as membership of the Water Quality Association in its efforts to maintain highest global quality standards.

# “ All Solutions of Water ”



Household Water Purification.....	1 - 2
Commercial / Industrial.....	3 - 16
Filter.....	17 - 22
Components.....	23 - 30
Media.....	31
Booster Pump.....	32

# HOUSEHOLD WATER PURIFICATION

## WATER BOTTLE FILTER

Collapsible. Durable. Leak Proof.  
BPA Free. Safe. ECO friendly.  
Medical Grade Silicone



Product Code : 0115035



## STANDARD / R.O. SYSTEM

TREATTON

Enjoy safe drinking water at home with Treatton water filter system. All of our products are made out of materials that are safe to the consumers which uses its high standards to ensure that the products being manufactured are clean and safe to use.



STANDARD 5 STAGES

Product code : 1305016

- FILTER :
- Ceramic Filter
  - Carbon Block Filter
  - Resin Filter
  - Post Carbon Filter
  - Inline Post Carbon Filter



STANDARD CERAMIC-MINERAL 5 STAGES

Product code : 1305036

- FILTER :
- Ceramic Filter
  - Carbon Block Filter
  - Resin Filter
  - Mineral Filter
  - Inline Post Carbon Filter



STANDARD  
CERAMIC 5 STAGES

Product code : 1305042

FILTER : Ceramic Filter  
Carbon Block Filter  
Resin Filter  
Post Carbon Filter  
Inline Post Carbon Filter



RO 50 GPD  
REVERSE OSMOSIS (RO) 5 STAGES

Product code : 1307006

FILTER : Polypropylene Sediment Filter  
Carbon Block Filter  
Resin Filter  
Reverse Osmosis Membrane  
Inline Post Carbon Filter



RO 100 GPD / BLACK BRAKET  
REVERSE OSMOSIS (RO) 5 STAGES

Product code : 1307192

FILTER : Polypropylene Sediment Filter  
Carbon Block Filter  
Resin Filter  
Reverse Osmosis Membrane  
Inline Post Carbon Filter



Model. TRT-50 GPD  
REVERSE OSMOSIS (RO) 5 STAGES

Product code : 1307159

FILTER : Polypropylene Sediment Filter  
Carbon Block Filter  
Resin Filter  
Reverse Osmosis Membrane  
Inline Post Carbon Filter



**INDUSTRIAL  
COMMERCIAL**

---



BIG BLUE 20"  
2 STAGES

Product code : 1302012

FILTER : Polypropylene Sediment Filter  
Granular Activated Carbon Filter



BIG BLUE 20"  
3 STAGES

Product code : 1303021

FILTER : Polypropylene Sediment Filter  
Granular Activated Carbon Filter  
Carbon Block Filter



Model. TRT-150 20"  
REVERSE OSMOSIS (RO) 5 STAGES

Product code : 1307020

FILTER : Polypropylene Sediment Filter  
Carbon Block Filter  
Resin Filter  
Reverse Osmosis Membrane  
Inline Post Carbon Filter

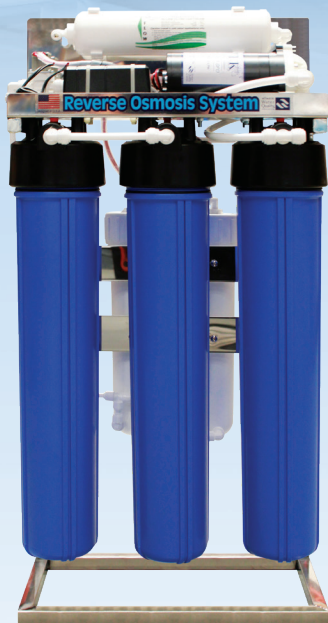


Model. TRT-300 20"  
REVERSE OSMOSIS (RO) 5 STAGES

Product code : 1307052

FILTER : Polypropylene Sediment Filter  
Carbon Block Filter  
Resin Filter  
Reverse Osmosis Membrane  
Inline Post Carbon Filter

## INDUSTRIAL / COMMERCIAL



Product code : 1307083



Product code : 1307139

## STANDARD SPECIFICATION

Model		TRT150STSS	TRT300STSS	TRT400STSS
Capacity		150 GPD	300 GPD	400 GPD
Stand Material		Stainless Steel		
Dimension (LxWxH)(cm)	Overall	40x22x68	40x22x68	40x22x68
		41x23x82	41x25x82	41x28x82
Prefilter		PP Filter 5 Micron 20"		
	GAC Carbon	GAC Carbon Filter 20"		
		Block Carbon Filter 20"		
RO Unit	RO Membrane	150 GPDx1 Set	150 GPDx2 Sets	400 GPDx1 Set
	Housing Membrane	2012x1 Set	2012x2 Sets	HS Membrane 400 GPD
Post Filter		Post Carbon Inline 2.5"x12"		
Booster Pump		100 GPD	300 GPD	400 GPD
Feed Solenoid Valve		1/4"24 VDC	3/8" 220 VAC	
Pressure Switch		Low & High Switch		
Flow Restrictor		400	800	1500
Electrical Supply		220 V 50 Hz		
Piping		PE Tube		
Price				
Product Code		1307082	1307083	1307139





Product code : 1307084



Product code : 1307140

## STANDARD SPECIFICATION

Model		TRT450STSS	TRT450STSS	TRT550STSS	TRT600STSS
Capacity		450 GPD	450 GPD	550 GPD	600 GPD
Stand Material					
Dimension (LxWxH)(cm)	Overall	40x22x68	40x22x68	40x22x68	40x22x68
		41x28x82	41x28x82	41x28x82	41x28x82
Prefilter	GAC Carbon				
RO Unit	RO Membrane	3012x2 Sets	150 GPDx3 Sets	3012x2 Sets	600 GPDx1 Set
	Housing Membrane	3012x2 Sets	2012x3 Sets	3012x2 Sets	3013x1 Sets
Post Filter					
Booster Pump		400 GPD	450 GPD	500 GPD	550 GPD
Feed Solenoid Valve		3/8" 220 VAC			
Pressure Switch		Low & High Switch			
Flow Restrictor		800+400	1500	1500	1600
Electrical Supply		220 V 50 Hz			
Piping		PE Tube			
Price					
Product Code		1307084	1307179	1307140	1307113

## INDUSTRIAL / COMMERCIAL



Product code : 1310032



Product code : 1310034

## STANDARD SPECIFICATION

Model		TRT150STPE	TRT300STPE		
Capacity		150 GPD	300 GPD		
Stand Material		Stainless Steel			
PE Tank		100L	200L	100L	200L
Dimension (LxWxH) (cm)	Structure	50x50x90	65x65x95	50x50x90	65x65x95
	Overall	50x50x165	65x65x180	50x50x165	65x65x180
Prefilter	PP	PP Filter 5 Micron 20"			
	GAC Carbon	GAC Carbon Filter 20"			
	Block Carbon	Block Carbon Filter 20"			
RO Unit	RO Membrane	150 GPDx1 Set	150 GPD x2 Sets		
	Housing Membrane	2012x1 Set	2012x2 Sets		
Post Filter		Post Carbon Inline 2.5"x12"			
Booster Pump		100 GPD	300 GPD		
Feed Solenoid Valve		1/4"24 VDC	3/8" 220 VAC		
Pressure Switch		Low & High Switch			
Flow Restrictor		400	800		
Electrical Supply		220 V 50 Hz			
Piping		PE Tube			
Price					
Product Code		1310032	1310021	1310034	1310023



Product code : 1310035



Product code : 1310037

## STANDARD SPECIFICATION

Model		TRT450STPE	TRT600STPE		
Capacity		450 GPD	600 GPD		
Stand Material					
PE Tank		100L	200L	100L	200L
Dimension (LxWxH) (cm)	Structure	50x50x90	65x65x95	50x50x90	65x65x95
	Overall	50x50x165	65x65x180	50x50x165	65x65x180
Prefilter	PP	PP Filter 5 Micron 20"			
	GAC Carbon	GAC Carbon Filter 20"			
	Block Carbon	Block Carbon Filter 20"			
RO Unit	RO Membrane	150 GPDx3 Sets	3012x2 Sets		
	Housing Membrane	2012x3 Sets	3012x2 Sets		
Post Filter		Post Carbon Inline 2.5"x12"			
Booster Pump		400 GPD	300 GPDx2 Sets		
Feed Solenoid Valve		3/8" 220 VAC			
Pressure Switch		Low & High Switch			
Flow Restrictor		400&800	800x2 Sets		
Electrical Supply		220 V 50 Hz			
Piping		PE Tube			
Price					
Product Code		1310035	1310036	1310037	1310038

## INDUSTRIAL / COMMERCIAL

R/O 12 m<sup>3</sup>/day

Product code : 1310068

## STANDARD SPECIFICATION

Mode	Pretreatment & R/O 12 m <sup>3</sup> /day	Pretreatment & R/O 6 m <sup>3</sup> /day	Pretreatment & R/O 3 m <sup>3</sup> /day
Capacity	12 m <sup>3</sup> /day	6 m <sup>3</sup> /day	3 m <sup>3</sup> /day
Pressure Pump	SHIMGE BW 2-6(220V)	DOSAG VCP 2-70(220V)	DOSAG VCP 2-70(220V)
Pretreatment	FRP Tank 13x48 Gray 3 Sets with Manual Control Valve	FRP Tank 10x35 Gray 3 Sets with Manual Control Valve	FRP Tank 8x44 Gray 3 Sets with Manual Control Valve
	PE Tank 100L (Brine Tank) (Optional)		
Prefilter	PP Filter 5 Micron 20" x 1 set	PP Filter 10" & Carbon Filter	PP Filter 5 Micron 20" x 1 set
R/O Membrane	600 GPD x 6 sets	400 GPD x 6 sets	4021 x 1 set
Feed Solenoid Valve	1/2"	1/2"	1/2"
Flow Restricture	1500 x 6 sets	800 x 4 sets	-
Pressure Gouge	0-140 psi x 2 sets	0-150 psi x 2 sets	
Flow Meter	0.5-5 GPM x 2 sets	0.2-2 GPM x 2 sets	0.2-2 GPM x 2 sets
Frame Structure	Stainless Steel		
Electrical Works	Relay		
Piping	UPVC & PE		
Price			
Product Code	1310068	1310083	1310047



R/O 6 m<sup>3</sup>/day  
Product code : 1310083



R/O 6 m<sup>3</sup>/day  
Product code : 1310083

## INDUSTRIAL / COMMERCIAL

### STANDARD SPECIFICATION

Model		6QPD	12QPD	18QPD	24QPD
Capacity		6m <sup>3</sup> /day ( 250 LPH )	12m <sup>3</sup> /day ( 500 LPH )	18m <sup>3</sup> /day ( 750 LPH )	24m <sup>3</sup> /day ( 1,000 LPH )
High Pressure Pump	Model	DOSAG VCP2-150	DOSAG VCP2-150	DOSAG VCP2-180	DOSAG VCP2-220
	Power	1.5 kW	1.5 kW	2.2 kW	2.2 kW
	Volt	220 V 50 Hz			
Prefilter	Housing	Filter Housing 20"x1	Filter Housing 20"x2	Filter Housing Big Blue 20"x1	
	Filter	PP Filter 5 Micron 20"x1	PP Filter 5 Micron 20"x1	PP Big Blue Filter 5 Micron 20"x1	
RO Membrane		Ultratek 4040 (E)x1	Ultratek 4040 (E)x2	Ultratek 4040 (E)x3	Ultratek 4040 (E)x4
RO Vessel (SUS304)		4040 x 1	4040 x 2	4040 x 3	4040 x 4
Feed Solenoid Valve		3/4"	3/4"	1"	1"
Flushing Solenoid Valve		1/2"	1/2"	3/4"	3/4"
Pressure Gauge		0-80 psi x 1 (Pre-filter), 0-300 psi x 2 (Inlet Membrane/Outlet Membrane)			
Flow Meter	Permeate	0.2-2 GPM	0.5-5 GPM	2-10 GPM	2-10 GPM
	Concentrate	0.5-5 GPM	0.5-5 GPM	2-10 GPM	2-16 GPM
Low Pressure Switch		Single P506			
High Pressure Switch		Single P516			
SUS Frame Structure Size (LxWxH)(cm)		65 x 55 x 130	65 x 55 x 130	145 x 60 x 125	145 x 60 x 125
Electrical Works		Relay			
Piping		UPVC			
Price					
Product Code		1307028	1307029	1307031	1307032



12 QPD

Product code : 1307029



18 QPD

Product code : 1307031



24 QPD

Product code : 1307032

## INDUSTRIAL / COMMERCIAL



6 QPD LOW  
Product code : 1307038



12 QPD LOW  
Product code : 1307030



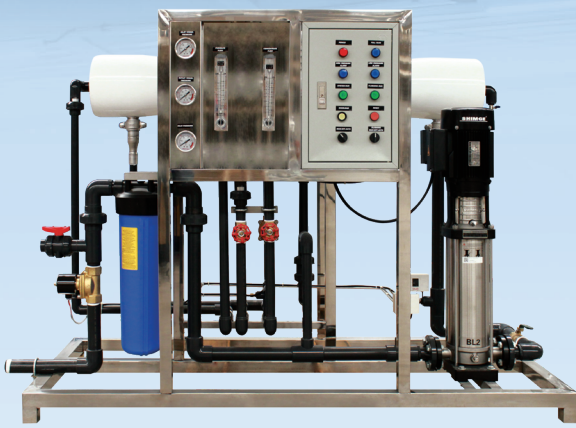
## STANDARD SPECIFICATION

Model		6QPD LOW	12QPD LOW
Capacity		6m <sup>3</sup> /day (250 LPH)	12m <sup>3</sup> /day (500 LPH)
High Pressure Pump	Model	DOSAG VCP2-60	
	Power	0.75 kW	
	Volt	220 V 50 Hz	
Prefilter	Housing	Filter Housing 20"x1	
	Filter	PP Filter 5 Micron 20"x1	
RO Membrane		Ultratek 4040 (L) x 1	Ultratek 4040 (L) x 2
RO Vessel (SUS304)		4040 x 1	4040 x 2
Feed Solenoid Valve		3/4"	
Flushing Solenoid Valve		1/2"	
Pressure Gauge		0-80 psi x 1 (Pre-filter), 0-300 psi x 2 (Inlet Membrane/Outlet Membrane)	
Flow Meter	Permeate	0.2-2 GPM	0.5-5 GPM
	Concentrate	0.5-5 GPM	0.5-5 GPM
Low Pressure Switch		Single P506	
SUS Frame Structure Size (LxWxH)(cm)		50 x 55 x 130	65 x 55 x 130
Electrical Works		Relay	
Piping		UPVC	
Price			
Product Code		1307038	1307030

## INDUSTRIAL / COMMERCIAL

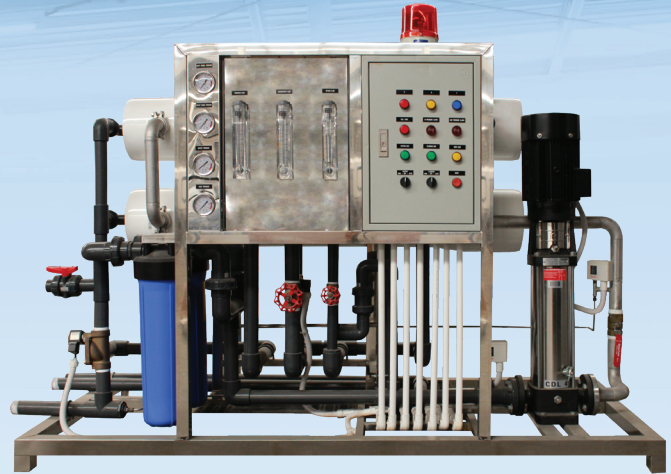
## STANDARD SPECIFICATION

Capacity (m <sup>3</sup> /hr)		1m <sup>3</sup> /hr	2m <sup>3</sup> /hr	3-3.5m <sup>3</sup> /hr	4-5m <sup>3</sup> /hr	10m <sup>3</sup> /hr
Prefilter	Housing	Big Blue 20"x2	Big Blue 20"x2	SS Cartridge 20"x2	SS Cartridge 5x20"	SS Cartridge 5x30"
	Filter	PP BB 20"x1	PP BB 20"x2	PP BB 20"x2	PP 20"x5	PP 30"x5
High Pressure Pump	Model	DOSAG VCP2-220	DOSAG VCP4-160	DOSAG VCP8-160	DOSAG VCP8-160	DOSAG VCP16-140
	Power	2.2 kW	3 kW	5.5 kW	5.5 kW	15 kW
	Volt	220V (or 380V)	380V	380V	380V	380V
RO Membrane		Ultratek 8040(E) x1	Ultratek 8040(E) x2	Ultratek 8040(E) x3	Ultratek 8040(E) x4	Ultratek 8040(E) x9
RO Vessel (FRP)		8040x1	8040x2	8040x3	8080x2	80120x3
Feed Solenoid Valve		1.5"	1.5"	2"	2"	2.5"
Flushing Solenoid Valve		1"	1"	1.5"	1.5"	2"
Pressure Gauge		0-80 psi x 1, 0-300 psi x 2	0-80 psi x 2 (Pre-filter), 0-300 psi x 2 (Inlet Membrane/Outlet Membrane)			
Flow Meter	Permeate	2-10 GPM	2-16 GPM	2-24 GPM	5-35 GPM	20-60 GPM
	Concentrate	2-16 GPM	2-16 GPM	5-35 GPM	4-24 GPM	20-60 GPM
	Return	-	2-10 GPM	5-35 GPM	2-16 GPM	5-30 GPM
Low Pressure Switch		DANFOSS KP-35				
High Pressure Switch		DANFOSS KP-36				
SUS Frame Structure Size (LxWxH)(cm)		180X80X130	200X90X130	200X90X130	250X100X130	-
Electrical Works		Relay				
Piping		UPVC & SUS 304				
Price						
Product Code		1307035	1307036	1307041	1307057	1307042
Optional	RO Vessel : SUS304					
	Electrical Works : PLC					
	TDS/Conductivity Meter					
	Anti-scalant Unit					
	CIP (Clening In Place) Unit					
	RO water Flushing (with CIP)					



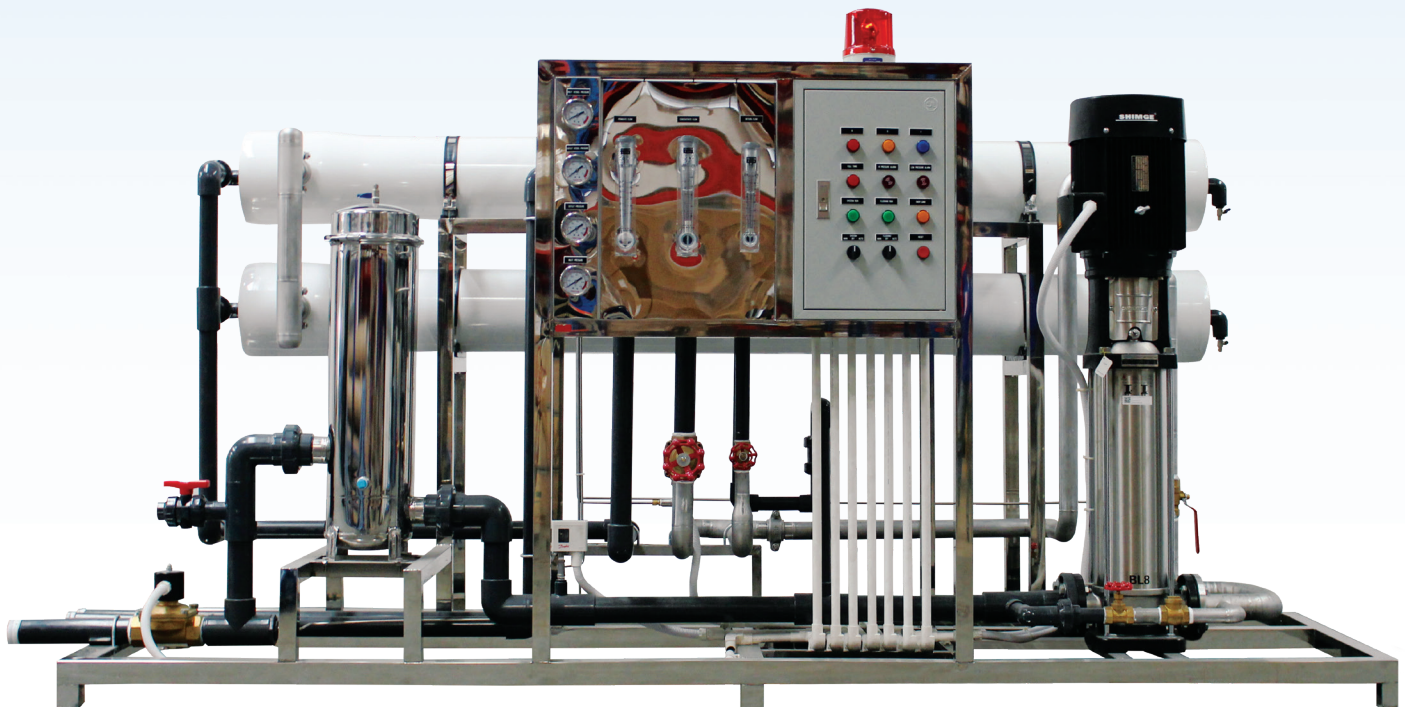
RO 1m<sup>3</sup>/hr

Product code : 1307035



RO 2m<sup>3</sup>/hr

Product code : 1307036



RO 4-5m<sup>3</sup>/hr

Product code : 1307057

# TREATTON FILTER CARTRIDGES

## POLYPROPYLENE SEDIMENT FILTER



Polypropylene Sediment Filter 10 inch		
Product Code	Model	Rating
0103121	PP 01-10	1 um
0103122	PP 05-10	5 um
0103123	PP 10-10	10 um
0103187	Big Blue PP 05-10	5 um

Polypropylene Sediment Filter 20 inch		
Product Code	Model	Rating
0103124	PP 01-20	1 um
0103125	PP 05-20	5 um
0103126	PP 10-20	10 um
0103188	Big Blue PP 05-10	5 um

Polypropylene Sediment Filter 30-40 inch		
Product Code	Model	Rating
0103127	PP 01-30	1 um
0103128	PP 05-30	5 um
0103129	PP 10-20	10 um
0103130	PP 05-40	5 um

Orange Surface Polypropylene Sediment Filter		
Product Code	Model	Rating
0103182	5 M 10" (Melt Blown)(Orange Surface)	5 um
0103183	5 M 20" (Melt Blown)(Orange Surface)	5 um
0103184	5 M 30" (Melt Blown)(Orange Surface)	5 um
0103185	Big Blue 5 M 20" (Melt Blown)(Orange Surface)	5 um
0103186	5 M 40" (Melt Blown)(Orange Surface)	5 um



## PLEATED FILTER



Pleated Filter	
Product Code	Model
0102025	Pleated 1M 10"
0102034	Pleated 5M 10"
0102045	Pleated 5M 10" (White)
0102039	Pleated 10M 10"
0102027	Pleated 20M 10"
0102028	Pleated 50M 10"
0102036	Pleated Big Blue 5M 10"
0102041	Pleated Big Blue 5M 10" (Net)
0102018	Pleated Big Blue 10M 10"
0102031	Pleated Big Blue CF 10-10
0102043	Pleated Big Blue 20M 10"
0102042	Pleated Big Blue 50M 10"
0102033	Pleated 5M 20"
0102035	Pleated Big Blue 5M 20"
0102022	Pleated Big Blue 10M 20"
0102044	Pleated Big Blue 20M 20"
0102040	Pleated Big Blue 50M 20"

## STRING WOUND FILTER

String Wound Filter	
Product Code	Model
0105038	String Wound 5M 10"
0105039	String Wound 5M 20"
0105040	String Wound 5M 30"
0105041	String Wound 5M 40"



## ABSOLUTE FILTER

Absolute Filter	
Product Code	Model
0101023	Absolute 0.1M 10" (Red O-Ring)
0101024	Absolute 0.22M 10" (Red O-Ring)
0101025	Absolute 0.45M 10" (Red O-Ring)
0101026	Absolute 0.1M 20" (Red O-Ring)
0101027	Absolute 0.22M 20" (Red O-Ring)
0101028	Absolute 0.45M 20" (Red O-Ring)

# TREATTON FILTER CARTRIDGES

## ACTIVATED CARBON BLOCK FILTER

Activated Carbon Block Filter ( CTO )	
Product Code	Model
0107010	Block Carbon 10" ( Blue Cap )
0107013	Block Carbon 20" ( Blue Cap )
0107079	Block Carbon Big Blue 10"
0107080	Block Carbon Big Blue 20"

Carbon Cellulose Filter	
Product Code	Model
0107022	Carbon Cellulose 10M 20" ( 6 Ditch )
0107024	Carbon Cellulose 10M 10" ( Pleated )
0107023	Carbon Cellulose 10M 20" ( Pleated )



UDF Carbon Filter		
Product Code	Model	Media
0111042	UDF TREATTON3 10"	ID 600
0111043	UDF TREATTON3 20" ( Blue )	Carbon
0111072	UDF TREATTON3 10" ( Blue )	Biosis
0111073	UDF TREATTON3 20"	Biosis
0111090	UDF TREATTON 10" ( Blue )	AQUASORB
0111096	UDF TREATTON 12" ( Blue )	AQUASORB ID 600



## SOFTENER FILTER

## UDF Softener Filter ( Resin )

Product Code	Model
0111060	UDF TREATTON 20" (Yellow) Resin
0111066	UDF TREATTON3 10" (Blue) Resin
0111095	UDF TREATTON 12" (Yellow) Resin



Code: 0111038



Code: 0111025



Code: 0111091



Code: 0111095



Code: 0111094



Code: 0111060



Code: 0111027

## UDF Filter

Product Code	Model
0111093	UDF TREATTON 12" (Yellow)
0111028	UDF TREATTON 20" (Yellow)
0111025	UDF TREATTON 10" (Blue)
0111094	UDF TREATTON 12" (Blue)
0111027	UDF TREATTON 20" (Blue)

## UDF Filter

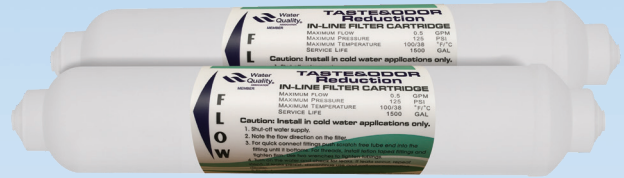
Product Code	Model
0111040	UDF TREATTON3 10" (Blue)
0111041	UDF TREATTON3 20" (Blue)
0111038	UDF TREATTON3 10" (Yellow)
0111039	UDF TREATTON3 20" (Yellow)
0111091	UDF TREATTON 10" (Gold)

# TREATTON FILTER CARTRIDGES

## INLINE FILTER



Code: 0112119



Code: 0112120

Sediment Inline Filter Cartridge (PP)	
Product Code	Model
0112131	Inline TREATTON 2"x10" (PP)
0112119	Inline TREATTON 2"x10" (PP)(Quick Connecting)
0112137	Inline TREATTON 2.5"x12" (PP)
0112125	Inline TREATTON 2.5"x12" (PP)(Quick Connecting)

Granular Active Carbon Inline Filter Cartridge (GAC)	
Product Code	Model
0112132	Inline TREATTON 2"x10" (GAC)
0112120	Inline TREATTON 2"x10" (GAC)(Quick Connecting)
0112138	Inline TREATTON 2.5"x12" (GAC)
0112126	Inline TREATTON 2.5"x12" (GAC)(Quick Connecting)



Code: 0112121



Code: 0112123

Activated Carbon Block Inline Filter Cartridge (CTO)	
Product Code	Model
0112133	Inline TREATTON 2"x10" (CTO)
0112121	Inline TREATTON 2"x10" (CTO)(Quick Connecting)
0112139	Inline TREATTON 2.5"x12" (CTO)
0112127	Inline TREATTON 2.5"x12" (CTO)(Quick Connecting)

Mineral Inline Filter Cartridge	
Product Code	Model
0112135	Inline TREATTON 2"x10" (Mineral)
0112123	Inline TREATTON 2"x10" (Mineral)(Quick Connecting)
0112141	Inline TREATTON 2.5"x12" (Mineral)
0112129	Inline TREATTON 2.5"x12" (Mineral)(Quick Connecting)





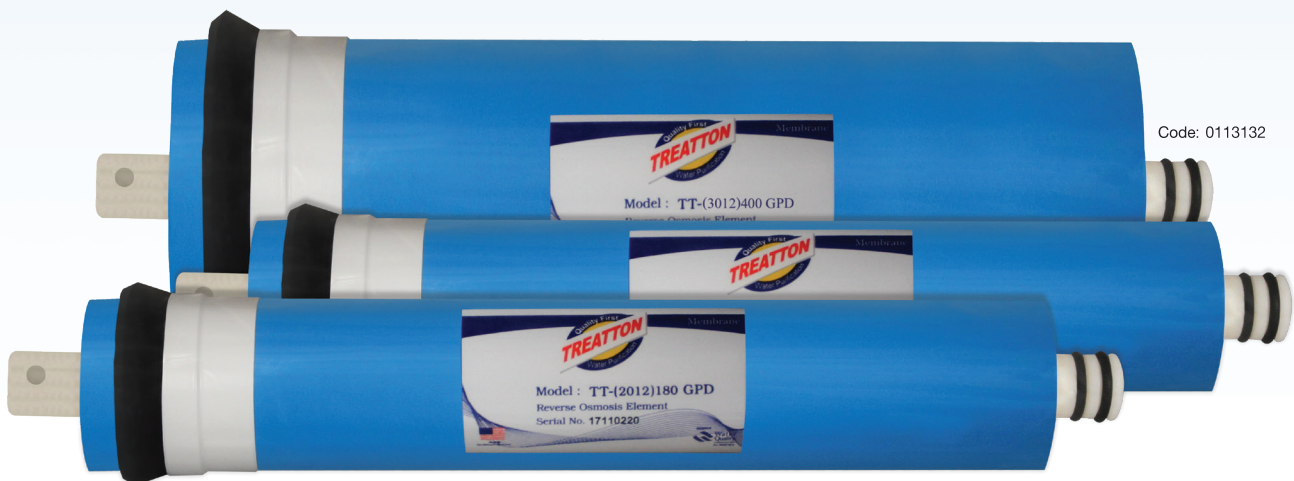
## INLINE FILTER



Code: 0112134

Nano Silver Inline Filter Cartridge	
Product Code	Model
0112134	Inline TREATTON 2"x10" (Nano Silver)
0112122	Inline TREATTON 2"x10" (Nano Silver)(Quick Connecting)
0112296	Inline TREATTON 2.5"x12" (Nano Silver)
0112128	Inline TREATTON 2.5"x12" (Nano Silver)(Quick Connecting)
0112140	Inline TREATTON 2.5"x12" (Nano)(No Sticker)

## MEMBRANES FILTER



Code: 0113132

Code: 0113171

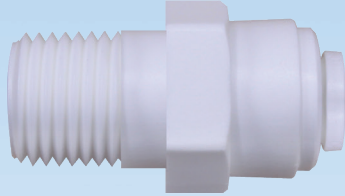
TREATTON Reverse Osmosis (RO) Membranes Filter Cartridge			
Product Code	Model	Product Code	Model
0113127	Membranes RO-50 GPD	0113131	Membranes RO-3012-300 GPD
0113128	Membranes RO-70 GPD	0113133	Membranes RO-3013-300 GPD
0113129	Membranes RO-100 GPD	0113132	Membranes RO-3012-400 GPD
0113130	Membranes RO-150 GPD	0113134	Membranes RO-3013-400 GPD
0113171	Membranes RO-180 GPD	0113170	Membranes RO-3012-415 GPD

# TREATTON COMPONENTS

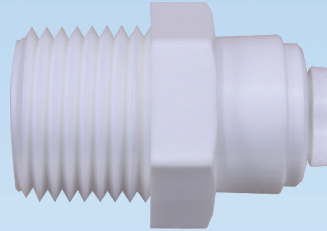
## ADAPTER



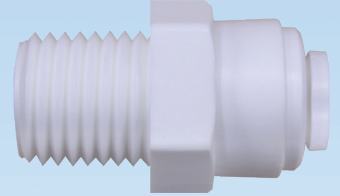
Code: 0302034



Code: 0302010



Code: 0302035



Code: 0302033

Male Straight Adapter			
Product Code	Model	MIP	OD
0301045	1042	1" / 8	1" / 4
0301046	1044	1" / 4	1" / 4
0301047	1046	3" / 8	1" / 4
0301048	1064	1" / 4	3" / 8
0301049	1066	3" / 8	3" / 8
0301050	1068	1" / 2	3" / 8
0301051	1086	1" / 2	1" / 2
0301057	M22	1 / 4	1 / 4
0301058	M33	3 / 4	3 / 8
0301059	M44	1 / 2	1 / 2
0301060	M66	3 / 4	3 / 4
0301098	JF-1244	1 / 4	1 / 4
0301099	JF-1244(Long)	1 / 4	1 / 4

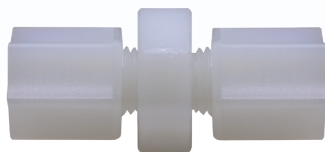


Code: 0301056

Female Straight Adapter			
Product Code	Model	FIP	OD
0301056	2544	1 / 4	1 / 4

Male Straight Adapter (Speed Fit)			
Product Code	Model	MIP	OD
0302010	1042	1 / 8	1 / 4
New	1044	1 / 4	1 / 4
0302035	1046	3 / 8	1 / 4
0302033	1064	1 / 4	3 / 8
0302034	1066	3 / 8	3 / 8
0302031	1068	1 / 2	3 / 8
New	1086	1 / 2	1 / 2
0302032	+O-Ring	7 / 16	3 / 8

Shaped 2 Open Connect (Speed Fit)			
Product Code	Model	OD	OD
0302036	154	1 / 4	1 / 4
0302037	1564	1 / 4	3 / 4
0302038	1566	3 / 8	3 / 8

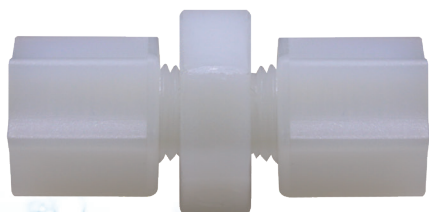


Code: 0301052



Code: 0302053

2 Way Divider (Speed Fit)			
Product Code	OD	OD	OD
0302063	1 / 4	1 / 4	1 / 4
0302064	3 / 8	3 / 8	3 / 8



Code: 0301054

Straight 2 Open Adapter			
Product Code	Model	OD	OD
0301052	154	1 / 4	1 / 4
0301053	1564	1 / 4	3 / 8
0301054	1566	3 / 8	3 / 8



Code: 0303029



Code: 0303030



Code: 0303031



Code: 0303032

Male Elbow Adapter			
Product Code	Model	MIP	OD
0303028	4042	1/8	1/4
0303029	4044	1/4	1/4
0303030	4046	3/8	1/4
0303031	4064	1/4	3/8
0303032	4066	3/8	3/8
New	4068	1/2	3/8
New	4086	3/8	1/2

Male Elbow Adapter (Speed Fit)			
Product Code	Model	MIP	OD
0304009	4042	1/8	1/4
0304010	4044	1/4	1/4
0304011	4046	3/8	1/4
0304038	4064	1/4	3/8
0304039	4066	3/8	3/8
0304042	4068	1/2	3/8
New	4086	3/8	1/2

Female Elbow Adapter			
Product Code	Model	FIP	OD
0303033	45042	1/8	1/4

Female Elbow Adapter (Speed Fit)			
Product Code	Model	FIP	OD
New	45042	1/8	1/4

L Shaped 2 Open Adapter			
Product Code	Model	OD	OD
0303027	504	1/4	1/4
New	5064	3/8	1/4
0303034	506	3/8	1/4

L Shaped 2 Open Adapter (Speed Fit)			
Product Code	Model	OD	OD
0304008	504	1/4	1/4
0304041	5064	3/8	1/4
0304040	506	3/8	3/8



Code: 0303027



New



Code: 0303034

# TREATTON COMPONENTS

## UNION T ADAPTER / T ADAPTER



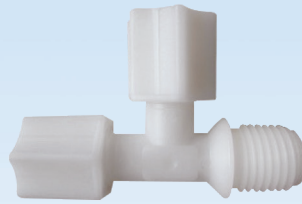
Code: 0305020



Code: 0305021



Code: 0305034



Code: 0305022



Code: 0306011



Code: 0306010

### Union T Adapter

Product Code	Model	OD	OD	OD
0305020	702	1/4	1/4	1/4
New	704	3/8	1/4	3/8
0305021	706	3/8	3/8	3/8
0306013	702	1/4	1/4	1/4
0306024	704	3/8	1/4	3/8
0306014	706	3/8	3/8	3/8

### T Adapter

Product Code	Model	OD	OD	MIP
0305034	6044	1/4	1/4	1/4
New	6066	3/8	3/8	3/8
0305022	7544	OD	MIP	OD
		1/4	1/4	1/4
0305023	7566	3/8	3/8	3/8
New	7546	3/8	1/4	1/4

### T Adapter (Speed Fit)

Product Code	Model	OD	OD	MIP
0306010	6044	1/4	1/4	1/4
0306022	6066	3/8	3/8	3/8
		OD	MIP	OD
0306011	7544	1/4	1/4	1/4
		3/8	3/8	3/8
New	7546	3/8	1/4	1/4

Clip		
Product Code	Model	
0605011	Treatton-Small Clip	2"
0605012	Treatton-Small Dual Clip	2"x2"
0605029	Treatton-Small Dual Clip	2"x2"
0605010	Treatton-Dual Clip	2"x2.5"
0605023	Treatton3-Dual Clip-DC2500 WA	2"x2.5"
0605008	Treatton-Big Clip	2.5"
0605009	Treatton-Big Dual Clip	2.5"x2.5"
0605022	Treatton3-Big Dual-C2500 WA	2.5"



Code: 0605011



Code: 0605012



Code: 0605008



Code: 0605010

## VALVE & FITTING

### Valve & Fitting

Product Code	Model	OD	OD
0603027	Ball Valve	1/4	1/4
0603028	Ball Valve	3/8	3/8
0603029	Ball Valve	3/8	1/4
0603030	Ball Valve Plastic "Uni Pure"	1/4	1/4

Product Code	Model	MIP	Tube	Tube	FIP
0603031	Tank Ball Valve "Uni Pure"	-	-	1/4	1/4
0603035	Tank Ball Valve "Uni Pure"	-	-	3/8	1/4
0603036	Ball Valve "Uni Pure"	-	3/8	3/8	
0603037	Ball Valve & T-Way Uni Pure Plastic	1/2	-	1/4	1/2

Product Code	Model
0604030	Shut Off Valve
0604031	Tank Valve
0604036	T-Way Connector
0604039	T-Way Connector "Uni Pure"

Product Code	Model	MIP	OD
06040083	Check Valve 4042	1" / 8	1" / 4
		1" / 4	1" / 4



Code: 0604083



Code: 0603030



Code: 0604031



Code: 0604086



Code: 0603029



Code: 0603031



Code: 0607031

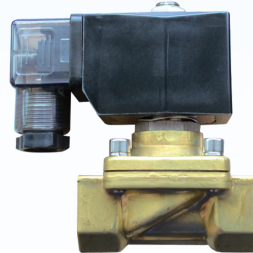
Code: 0607044

Faucet	
Product Code	Model
0607031	Faucet For RO
0607044	Faucet 1/4"

## SOLENOID VALVE

### Solenoid Valve

Product Code	Model	
0617091	1" / 2	220VAC
0617092	3/4"	
0617093	3/8"	
0617094	1/2"	
0617095	3/4"	
0617096	1"	
0617097	1-1/2"	
0617098	2"	



Code: 0617091



Code: 0618004



Code: 0618026



Code: 0618027

### Pressure Switch

Product Code	Model
0618004	High Pressue Switch
0618005	Low Pressue Switch
0618026	High Pressue Switch (speed fit)
0618027	Low Pressue Switch (speed fit)

# TREATON COMPONENTS

## FLOW METER

Flow Meter						
Product Code	Model	Connectop	Range		Type	
			GPM	LPM		
0704005	Z-3000	1/2" M	0.03-0.35	0.1-1.4	Kneading Board	
0704006	Z-3001	1/2" M	0.2-2	0.8-8		
0704007	Z-3002	1/2" M	0.5-5	2-18		
0704008	Z-3003	1" M	2-10	8-40		
0704050	Z-3003	3/4" M	2-10	8-40		
0704009	Z-3004	3/4" M	2-16	4-60		
0704010	Z-3005	1" M	4-24	20-100		
0704011	Z-3006	1" M	5-35	30-130		
0704049	Z-4001	1/2" F	0.2-2	1-7		Inline
0704039	Z-4003	3/4" F	1-10	4-36		
0704032	Z-4004	1" F	2-20	10-70		
0704023	Z-4005	1" F	5-30	20-110		
0704012	Z-4006	1 1/2" M	20-60	80-220		
0704013	Z-4007	2" M	30-110	100-400		
0704014	Z-4008	2" M	50-150	190-560		
0704015	Z-4009	2" F	60-200	220-750		
0704047	Z-4009	2" M	60-200	220-750		



## FLOW RESTRICTOR



Flow Restrictor							
Product Code	Model		Product Code	Model		Product Code	Model
0608003	100		0608013	400 (Male Type)		0608031	400 (NPTF)
0608004	300		0608027	200 (Speed Fit)		0608032	550 (NPTF)
0608005	400		0608028	250 (Speed Fit)		0608037	Uni Pure-300 (Speed Fit)
0608006	450		0608024	300 (Speed Fit)		0608038	Uni Pure-450 (Speed Fit)
0608007	550		0608025	420 (Speed Fit)		0608039	Uni Pure-800 (Speed Fit)
0608008	600		0608026	550 (Speed Fit)		0608040	Uni Pure-150 (Speed Fit)
0608009	800		0608029	800 (Speed Fit)		0608041	Flow Restrictor & Manual Flushing 400
0608012	300 (Male Type)		0608030	300 (NPTF)		0608042	Flow Restrictor & Flush Ball Valve 300

**HOUSING**



Code: 0612012



Code: 0609208

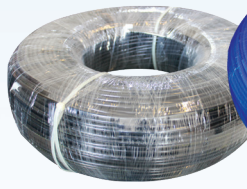
Code: 0609211

**Housing**

Product Code	Model			
0609242	10 inch FTH 10-6 Double O-Ring	White Cap	White Housing	3/8" Plastic Port
0609206	10 inch	Black Cap with Pressure Relief	Blue Housing	1/2" Plastic Port
0609207				1/2" Brass Port
0609208			Clear Housing	1 1/2" Plastic Port
0609209				1 1/2" Brass Port
0609210			Blue Housing	3 3/4" Brass Port
0609211			Clear Housing	3/4" Plastic Port
0612012	Housing Membrane "TREATTON3" (Double O-Ring)			
0612014	Housing Membrane "AQUATEK" (Double O-Ring)			



Code: 0620007



Code: 0620028



Code: 0620033

**PE Tube**

Product Code	Model			
0620007	TREATTON 3	1/4"	White	300 m/r
0620008	TREATTON	1/4"	Blue	300 m/r
0620010	TREATTON	3/8"	White	150 m/r
0620019	TREATTON 3	3/8"	White	150 m/r
0620020	TREATTON 3	1/4"	Blue	300 m/r
0620028	TREATTON 3	1/4"	Black	300 m/r
0620033	TREATTON	1/4"	Blue	30 m/r
0620034	TREATTON 3	3/8"	White	30 m/r
0620039	TREATTON 3	1/4"	Black	30 m/r

**TRANSFORMER**

**Transformer**

Product Code	Model
0809015	24 VDC 1.2 A
0809018	24 VDC 1.2 A
0809058	24 VDC 1.5 A (Flat Plug)
0809049	24 VDC 1.5 A (Round Plug)
0809050	24 VDC 2 A
0809051	24 VDC 3 A
0809016	36 VDC 2 A
0809017	48 VDC 2 A
0809060	Uni Pure 24 VDC 1.5 A
0809061	Uni Pure 24 VDC 1.5 A GVE



Code: 0809018



Code: 0809050



Code: 0809058

# TREATTON COMPONENTS

## PRESSURE GAUGE



Code: 0708027

Code: 0708035

Code: 0708028

Pressure Gauge	
Product Code	Model
0708027	0-80 PSI (Back)(Oil)
0708029	0-140 PSI (Back)(Oil)
0708035	0-150 PSI (Back)(Oil)
0708028	0-300 PSI (Back)(Oil)

Diaphragm Pump													
Product Code	0801121	0801076	0801122	0801101	0801123	0801019	0801115	0801110	0801131	0801102	0801114	0801103	0801104
Model	50 GPD	75 GPD	100 GPD	150 GPD	300 GPD	300 GPD	300 GPD(ECO)	350 GPD	400 GPD	400 GPD	450 GPD(ECO)	550 GPD	650 GPD
Voltage (VDC)	24 VDC	24 VDC	24 VDC	24 VDC	24 VDC	48 VDC	24 VDC	36 VDC	24 VDC	36 VDC	36 VDC	36 VDC	36 VDC
Current (A)	1.2 A	1.2 A	1.2 A	1.25 A	1.7 A	2 A	1.7 A	0.32 A	2.0 A	2.1 A	2.1 A	2.3 A	2.8 A

## PRESSURE TANK



Code: 0615026



Code: 0615009

Pressure Tank	
Product Code	Model
0615009	Treatton 3.2 Gallon
0615023	Treatton3 3.2 Gallon (White)
0615026	Treatton 3.2 Gallon (Plastic)
0615010	Treatton 5.5 Gallon
0615024	Treatton3 11 Gallon (White)
0615011	Treatton 14 Gallon
0615046	Treatton 14 Gallon + Tank Valve



# FIBERGLASS REINFORCED PLASTIC TANK (FRP TANK)



Code: 0903090

Code: 0903086

Code: 0903098

Code: 0903079

Code: 0903080

Fiberglass Reinforced Plastic Tank (FRP Tank)					
Product Code	Model	Top Open	Bottom Open	Color	Max. Pressure
0903079	7"x35"	2.5"	-	Natural	150 PSI
0903080	8"x35"	2.5"	-		
0903081	8"x44"	2.5"	-		
0903082	10"x54"	2.5"	-		
0903083	12"x48"	2.5"	-		
0903084	12"x52"	2.5"	-		
0903085	13"x54"	2.5"	-		
0903086	14"x65"	2.5"	-		
0903087	16"x65"	2.5"	-		
0903088	14"x65"	4"	-		
0903089	16"x65"	4"	-		
0903090	18"x65"	4"	-		

Product Code	Model	Top Open	Bottom Open	Color	Max. Pressure
0903091	21"x62"	4"	-	Natural	150 PSI
0903092	24"x65"	4"	-		
0903093	30"x72"	4"	-		
0903094	32"x72"	4"	-		
0903095	24"x65"	4"	4"		
0903096	30"x72"	4"	4"		
0903097	32"x72"	4"	4"		
0903098	8"x44"	2.5"	-		
0903099	10"x54"	2.5"	-	Black	100 PSI
0903100	12"x48"	2.5"	-		
0903101	12"x52"	2.5"	-		
0903102	14"x65"	2.5"	-		

Material : Polyethylene inner liner / FRP with Epoxy Resin outer shell  
 Max Temperature : 122 °F (50 °C)



# TREATMENT FILTRATION EQUIPMENT

## FILTER MEDIA



Code: 0401027



Code: 0401024

Activated Carbon is a filter media that removes any organics, odor and turbidity in water

Product Code	Model
0401019	คาร์บอน ID500 Mesh 8 x 30 (Charcoal)
0401023	คาร์บอน AQUASORB - ID600 Mesh 8 x 16 (1:21:50)
0401024	คาร์บอน AQUASORB - ID600 Mesh 8 x 30 (1:21:50)
0401025	คาร์บอน AQUASORB - ID900 Mesh 8 x 16 (1:21:50)
0401026	คาร์บอน AQUASORB - ID900 Mesh 8 x 30 (1:21:50)
0401027	คาร์บอน BIOSIS - ID1000 Mesh 8 x 16 (1:21:50)
0401028	คาร์บอน BIOSIS - ID1000 Mesh 8 x 30 (1:21:50)
0401040	คาร์บอน BIOSIS C2+ ID1000 Mesh 8 x 30 (Coconut)(50 ลิตร/25kg/ถุง)
0401041	คาร์บอน BIOSIS C2+ ID1000 Mesh 8 x 16 (Coconut)(50 ลิตร/25kg/ถุง)

Manganese is a filter media that removes iron and manganese in water

Product Code	Brand	Sizing(mm)	Capacity (gm. Fe /cu.ft.)	Packaging
0403006	ZMAG	0.6-1.8	Continuous 4.0 / Intermittent 1.5	20L /bag
0403002	ZMAG	0.6-1.8	Continuous 4.0 / Intermittent 1.5	25L /bag



Code: 0403002

Antmacite is a filter media that removes particle, dust, dirt in water

Product Code	Brand	Sizing(mm)	Spencific Gravity	Packaging
0402004	APZA	0.6-2.36	1.45-1.75	50L /bag



Code: 0402004

Code: 0405005



Code: 0405051

### Ion Exchange Resin

Product Code	Brand	Model	Capacity (meq /ml)	Packaging	Application
0405003	Pall Tech	PTC107 Food Grade(EXTRA)	1.9	25L /bag	Removes calcium and Magnesium ions to generate soft water
0405005	Pall Tech	PTC107 Food Grade(F1)	1.8	25L /bag	
0405043	Pall Tech	PTC107 Food Grade(F1)	1.8	20L /bag	
0405051	Pall Tech	Mixed Bed(Industrial)	2.14 H <sup>+</sup> /1.48 OH <sup>-</sup>	25L /bag	Demineralisation and decontamination

## BOOSTER PUMP



Code: 0801121



Code: 0801101



Code: 0801123



Code: 0801103



Code: 0801104

Booster Pump							
Product Code	Model	Volts (VDC)	Amps (A)	Flow (LPH)	Pressure (PSI)	Pressurization (MPa)	Overall Dimensions (mm)
0801121	50 GPD	24	0.9	48	80	1.2	185 x 100 x 97
0801122	100 GPD	24	1.2	65	80	1.2	185 x 100 x 97
0801101	150 GPD	24	1.25	69	60	1.2	195 x 105.7 x 100
0801123	300 GPD	24	1.7	120	60	1.2	195 x 100 x 97
0801020	400 GPD	24	2.0	180	60	1.2	195 x 100 x 97
0801102	450 GPD	36	2.1	155	60	1.0	192 x 105.7 x 100
0801103	550 GPD	36	2.3	174	60	1.0	192 x 105.7 x 100
0801104	650 GPD	36	2.8	215	60	1.0	192 x 105.7 x 100

Booster Pump are the most widely used pumps for R.O.  
 They are ideal for high pressure/low flow applications with low amp draw.  
 They can be mounted in any position, are compact, and are designed for long trouble-free life.

#### Features

- Quiet Operation
- Reliable, long lasting performance.

## Contact :

Function International Co., Ltd.  
 313 Charoenpattana Rd., Bangchan, Klongsamwa  
 Bangkok 10510, Thailand  
 Tel : 66-2540-6263 (Auto)  
 Fax : 66-2907-4100

[www.functioninter.co.th](http://www.functioninter.co.th)

